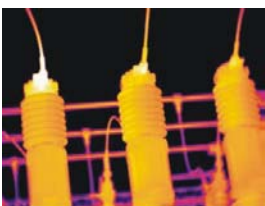
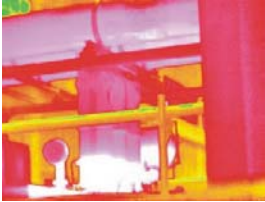


THT41, THT42 and **THT44** are hand-held infrared cameras developed in a rugged and ergonomic design, robust and shock-resistant for any working environment.



THT42 and **THT44** are featured with Infra Fusion technology to pin-point the problem exactly in high efficiency

THT41, THT42 and **THT44** are specifically designed for products predictive maintenance, electrical inspections, non-destructive testing, process control applications, quarantine inspection. security monitoring solutions, firefighting finding and rescue, building energy testing and diagnostics, veterinarian helper, etc.



1. IMAGING PERFORMANCE

	THT41	THT42	THT44
Thermal			
Detector type	UFPA		
Spectral range	8 ÷ 14µm		
Pixels	160 x 120, 25µm		
Sensitivity	0.1 °C @ 30°C		
Lens / FOV	11mm, 21°x 16°		
IFOV	2.27mrad		
Focusing	Auto / Manual		
Image frequency	50 Hz		50 Hz PAL / 60 Hz NTSC
Palette	4	6	8
Visual			
Built-in Digital Video	---	CMOS sensor 1600x1200 pxl (2Mpxl), 2 ²⁴ true colors	

2. IMAGING DISPLAY

	THT41	THT42	THT44
External display	3.6" TFT LCD screen		
Video output	---		PAL / NTSC
Infra fusion	---	Visual and IR blending	
Live thermal video recording on SD card		•	
Live thermal video recording via USB	---		•
Built-in flash memory	---		•

3. MEASUREMENT

	THT41	THT42	THT44
Temperature range	-20°C to +250°C		
Accuracy	±2%rdg or ±2°C		
Measurement modes	Hot/cold point mark and center point		
Laser pointer	---		•
Emissivity correction	Variable from 0.01 to 1.00, on-screen		
Internal emissivity table		•	
Saving fusion image	---		•
Alarm on temperature measurement		•	
Measurement features	Automatic correction based on distance, relative humidity, atmospheric transmission and external optics		

4. IMAGE STORAGE

	THT41	THT42	THT44
Media	Removable 2GB SD card		
File format	JPEG with analysis records		
Memory size	Up to 1000 images		
Voice annotation	---		60 s / image



5. LASER LOCATOR

	THT41	THT42	THT44
Classification type	- - -	Class 2	

6. PC CONNECTION

	THT41	THT42	THT44
USB 2.0	For image transfer	For video and image transfer	

7. POWER SYSTEM

	THT41	THT42	THT44
Battery type	AA alkaline battery or AA rechargeable battery		
Charging system	In camera or in battery charger		
Battery life	> 2 hours		
External power	AC adapter 110/220VAC, 50/60Hz		

8. ENVIRONMENT

	THT41	THT42	THT44
Operating temperature	-10°C to +50°C		
Operating humidity	10% to 95%HR		
Storage temperature	-20°C to +60°C		
Storage humidity	10% to 95%HR		
IP degree	IP54 IEC529 housing		
Shock	Operational: 25G, IEC68-2-29		
Vibration	Operational: 2G, IEC68-2-6		

9. DIMENSIONS

	THT41	THT42	THT44
Size (L x W x H)	240 x 111 x 124		
Weight	0.73 (battery included)		