



KT-140

THERMAL IMAGER



**High quality
for lowest price!**

A fully radiometric camera which records temperature at each point of the image

Manual focus

Recording in the extended jpg format (all data is included in the file but the image can be viewed as simple graphics)

Simple and clear menu and programming in English and Spanish; easily navigable even for beginners

Power supply: standard AA rechargeable cells or batteries, built-in charger

Image refreshing rate: 50 times per second

Vibration and shock resistant – stable, sharp images without a tripod

AGT – diaphragm and lens cover in one (protection + elimination of influence of lens self-heating)

4 colour palettes available

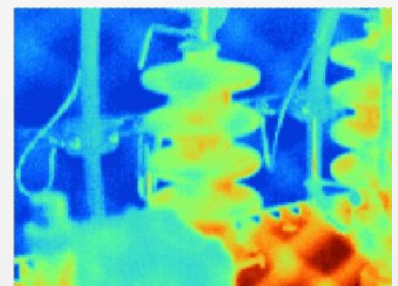
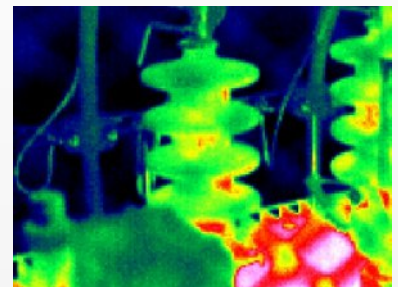
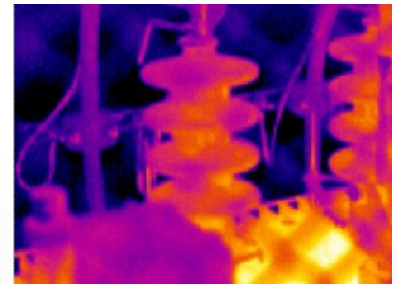
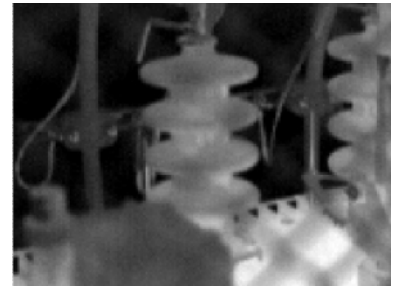
3.6" LCD display

Large memory capacity (standard replaceable SD card)

Water and dust proof casing (IP54)



Technical specification	
Detector type	Non-cooled microbolometric matrix (160 x 120 pixel, 25µm)
Spectral range	8-14µm
Thermal sensitivity	≤0.1°C at 30'
Field of view/ focus distance	20.6° x 15.5° / 11mm (standard lens)
Focus	Manual
Image refreshing	50 times per second
External display	LCD TFT 3.6", high-resolution
Temperature range	-20°C do 250°C
Accuracy	±2°C or 2% reading
Emissivity	Adjustable from 0.01 to 1.00 (with 0.01 increments) atmospheric transmission and outside optical conditions
Measurement properties	Automatic correction for distance, relative humidity, atmospheric transmission and outside optical conditions
Optical transmission correction	Automatic, based on signals from sensors
Image storage	2GB replaceable SD card
File format	JPG with thermograph data
Power supply	AA rechargeable cells, AA alkaline batteries
Charging	Built-in charger
Battery operating time	More than 3 hours of continuous operation
AC operation	AC adapter - 110/230 VAC, 50/60Hz
Working temperature	-10°C to 50°C
Storage temperature	-20°C to 60°C
Humidity	Operating and storage: 10% do 95%, non-condensing
Casing	IP54, IEC 529
Shocks	Working: 25G, IEC 68-2-29
Vibration	Working: 2G, IEC 68-2-6
Communication	USB 2.0: file transfer to PC
Weight	0.73kg (including batteries)
Dimensions	111mm x 124mm x 240mm



ADDITIONAL ACCESSORIES:

- BRACKET FOR MOUNTING THE CAMERA ON A TRIPOD
- SUN VISOR

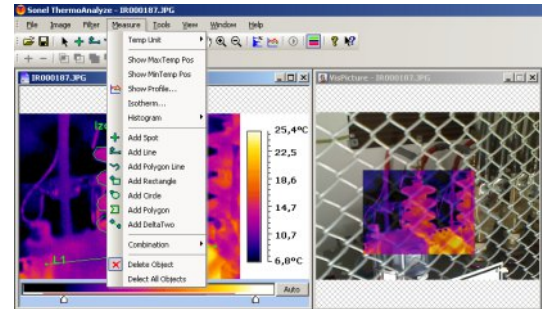


4 color palettes available

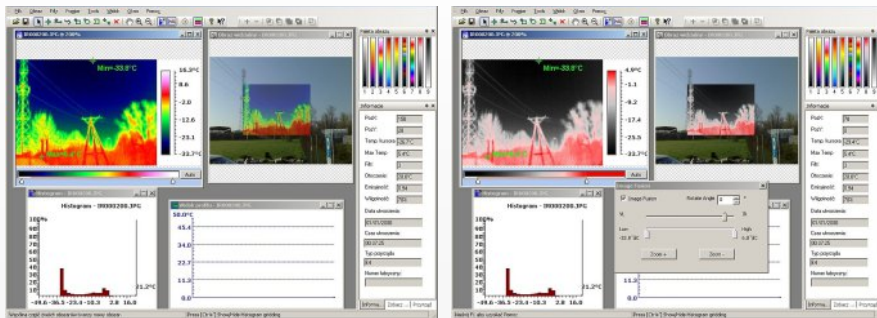
Correct the emissivity for the whole or a part of the thermograph – emissivity can be corrected separately for each selected image area.

Selection of reviewed areas – select a rectangular or oval area or an area of any shape. Then you can select the joint part of selected areas, combine or cut the areas, and move their borders.

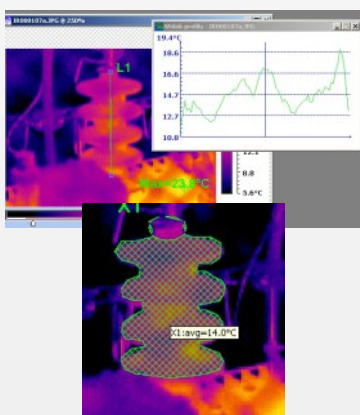
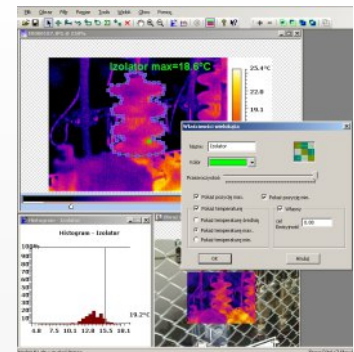
Read the temperature at any point – when the cursor is placed in the Information window, it displays continuously read temperature with current coordinates. Other saved information (maximum temperature, humidity, emissivity) is also available.



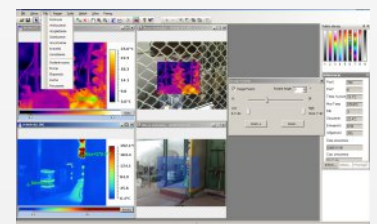
InfraFusion technology – thermograph is overlaid on a part of visual image, in a palette chosen by the user. The thermograph is overlaid with selected transparency for optimized presentation and marking of images, particularly when visual comparison of the area from the thermograph with the details on the visual image is difficult.



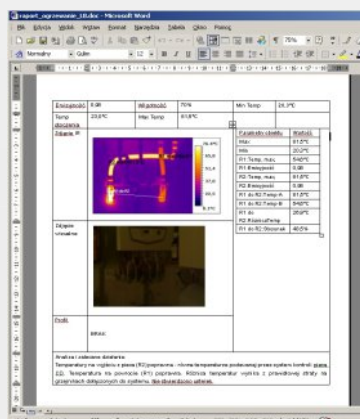
Automatic histograms for the whole image and each selected area; including graphic presentation of percent distribution of individual temperature ranges.



Determine and read the minimum, maximum and average temperature for the whole area or for each selected area. Select the section (straight or broken line) for which the averaged temperature can be determined and an automatic temperature distribution profile can be made.



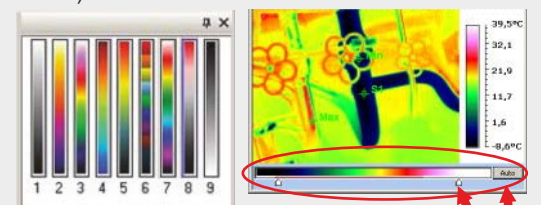
Sharpen, smooth, average, emphasize the edges of the object visible on the thermograph. Rotate or make a mirror image.



Create reports – also as an overlay for MS Word or Excel . Use the “drag and drop” method to transfer to the report all that you want to include in it: thermographs, corresponding visual images, analysis results for the whole or part of the image, histograms, etc.

Save all corrections and characteristic points for further review at a later time.

Select an optimum colour palette (from among 9 palettes available in the software) for the best visual presentation of temperature changes. Define the temperature range for the best presentation of the distribution (auto or manual mode).

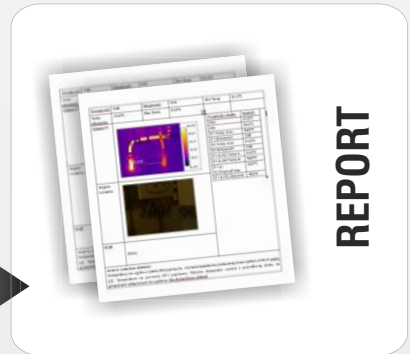
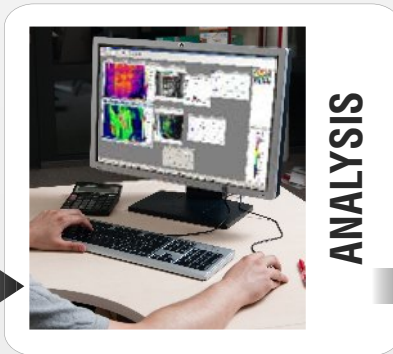
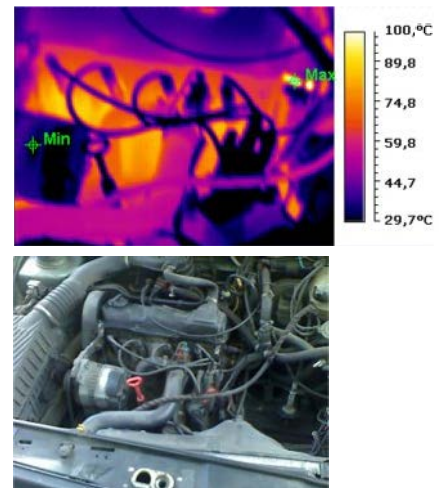
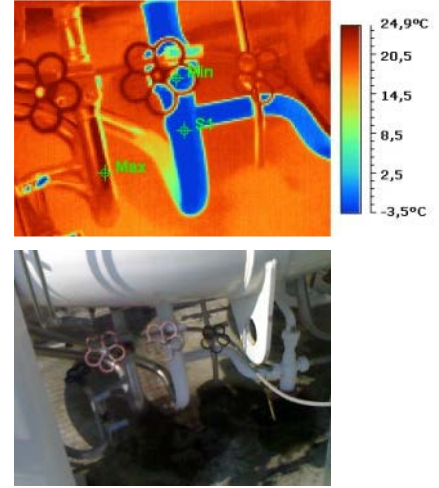




ANALYSE AND REPORT RESULTS WITH THE ATTACHED SOFTWARE



Unlimited
applications
in many areas!



The software licence is unlimited – you can use it on many computers simultaneously.